



WHAT'S NEW IN XCELSIUS® 2008

CREATE SUPERIOR DATA VISUALIZATIONS
FASTER WITH NEW FEATURES

4	Key Features of Xcelsius 2008	8	New Data Connectivity and Integration Options
4	New in Xcelsius 2008	8	One-Click Export to SAP BusinessObjects Enterprise Software
5	Improved Workflows	8	Export to Adobe Acrobat 9
5	A Redesigned User Interface	8	Export to Adobe AIR
5	Components Browser	8	External Interface Connection
5	Object Browser	8	Crystal Reports® Software Enhanced Integration
5	Integration of the Microsoft Excel Workflow	8	Life-Cycle Management
5	Copy and Paste	8	Portal Integration Kit for IBM WebSphere
6	New Components and Features	8	Connectivity to Adobe LiveCycle Data Services ES
6	New Components	8	Flynet Web Services Generator
6	Tree Map Chart	9	Flexible Design and Customization Functionality
6	History Component	9	Themes
6	Tab Set Container	9	Software Development Kit
6	Panel Container	10	SAP BusinessObjects Solutions
6	Trend Analyzer	10	SAP BusinessObjects Portfolio of Solutions
6	Reset Button	10	Turn Insight into Strategy
6	Print Button	11	Summary
6	Maps	11	Find Out More
7	Connection Refresh Button		
7	New Features		
7	Dual Y-Axis Option		
7	Alerts in Selectors		
7	Data Manager		
7	Filtered Rows Insertion		
7	Dynamic Selected Item		
7	Trigger Keys		
7	Add-On Manager		

KEY FEATURES OF XCELSIUS® 2008

SEE YOUR BUSINESS IN A WHOLE NEW LIGHT



Xcelsius® software delivers next-generation data visualization tools that let users of different skill levels in small, midsize, and large companies transform complex business data into actionable visual information. Xcelsius gives you the power of what-if analysis to shed light on any possible business decision.

With Xcelsius software, you can:

- **Build** sophisticated dashboards and visualizations – quickly
- **Customize** your dashboards to meet the unique needs of your business environment
- **Connect** your dashboards to any type of external data source
- **Maximize** the value of your IT solution with visual front ends
- **Deploy** your dashboards in Microsoft Office, Adobe PDF, portals, or on the Web
- **Empower** everyone to transform the way you run your business today with actionable visual information

Xcelsius 2008 makes it even easier for you to create data presentations and dashboards from personal and corporate data sources by providing the following key features:

- Improved workflows
- New components and features
- New data connectivity and integration options
- Flexible design and customization functionality

The Xcelsius user interface has been redesigned using Adobe Flash 9 and Adobe Flex technology. The object browser, property windows, menus, and toolbars have been completely redesigned to make it easier for you to create data visualization and get better results faster.

New in Xcelsius® 2008

Here's a quick snapshot of what's new in Xcelsius® 2008:

- Faster, easier creation of data visualizations
- New visualization components
- Integration with SAP® Business-Objects™ Enterprise software, Adobe products, and Crystal Reports® software
- Software development kit

IMPROVED WORKFLOWS

GET BETTER RESULTS AND INCREASE PRODUCTIVITY

A Redesigned User Interface

The Xcelsius user interface has been redesigned using Adobe Flash 9 and Adobe Flex technology (see Figure 1). The object browser, property windows, menus, and toolbars have been completely redesigned to make it easier for you to create data visualization and get better results faster.

Components Browser

The look and feel of the components browser has changed significantly from previous versions.

Interface

The components browser displays components in a sliding accordion menu. You can display components in a category, tree, or list view.

Favorites

You can add frequently used components to the favorites category in the category view.

Object Browser

The object browser has been enhanced with the new features described below.

Lock and Unlock

You can lock components in the object browser to prevent them from being selected or changed while the visualization is being designed.

Move Forward and Back

You can easily move components forward or backward in layers of the visualization by dragging the component or group toward the top or bottom of the object browser. Alternatively, you

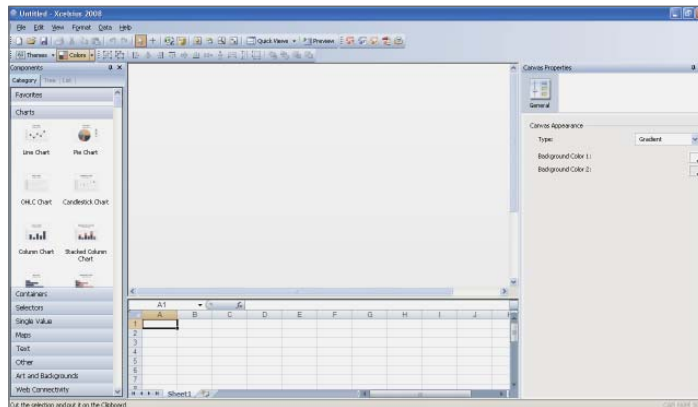


Figure 1:
Redesigned User
Interface

can select a component or group and then click the directional arrows at the bottom of the object browser.

Group and Ungroup

Grouped components appear as subsets in the object browser. You can add to or remove components that are in a group in the object browser.

Hide and Show

You can hide or display individual components and groups by clicking the dot or checkmark located in the column under the hide icon. To hide or show any component on the canvas, click the hide icon.

Integration of the Microsoft Excel Workflow

The Microsoft Excel data-mapping process is fully integrated with the Xcelsius designer tools, eliminating any need to alternate back and forth between Microsoft Excel and the designer. While a spreadsheet is a supported data source, you will never need to reimport one to adjust formulas or formats.

Copy and Paste

Increase your productivity by copying and pasting components between different instances of Xcelsius.

With Xcelsius 2008, you can:

- **Build** sophisticated dashboards and visualizations – quickly
- **Customize** your dashboards to meet the unique needs of your business environment
- **Connect** your dashboards to any type of external data source
- **Maximize** the value of your IT solution with visual front ends
- **Deploy** your dashboards in Microsoft Office, Adobe PDF, portals, or on the Web
- **Empower** everyone to transform the way you run your business today with actionable visual information

NEW COMPONENTS AND FEATURES

EMPOWER YOUR END USERS WITH IMPROVEMENTS IN XCELSIUS 2008

New Components

The new components in Xcelsius 2008 are described below.

Tree Map Chart

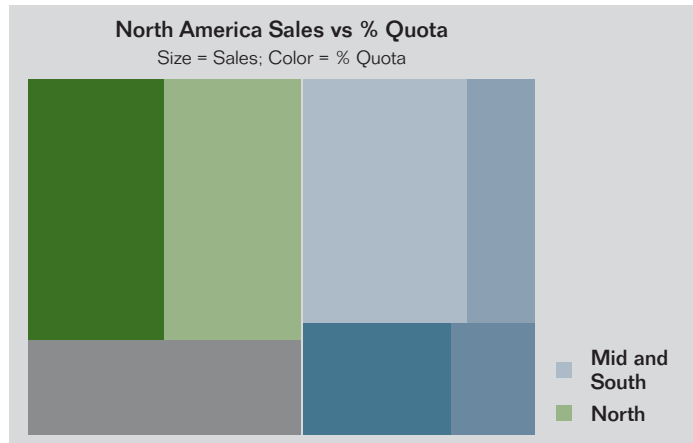
This chart enables you to display multiple dimensions of a data set using size and color within a space-constrained environment (see Figure 2).

History Component

Use this component to provide a simple method for your end users to track previous data updates, queries, and so on, right from the Xcelsius visual model. The history component captures a single value (cell) and inserts it into a contiguous row or column of data, based on a trigger or time interval.

Tab Set Container

This component enables you to easily create multitab dashboards, without writing any Microsoft Excel logic, for dynamic visibility configurations of the dashboard (see Figure 3).



Panel Container

With this component, you can group multiple components into a single well-organized scrollable container.

Trend Analyzer

Empower your end users to quickly spot trends and patterns in your company data. This component automatically inserts linear, logarithmic, polynomial, power, or exponential statistical calculations into charts, tables, and other components at runtime.

Reset Button

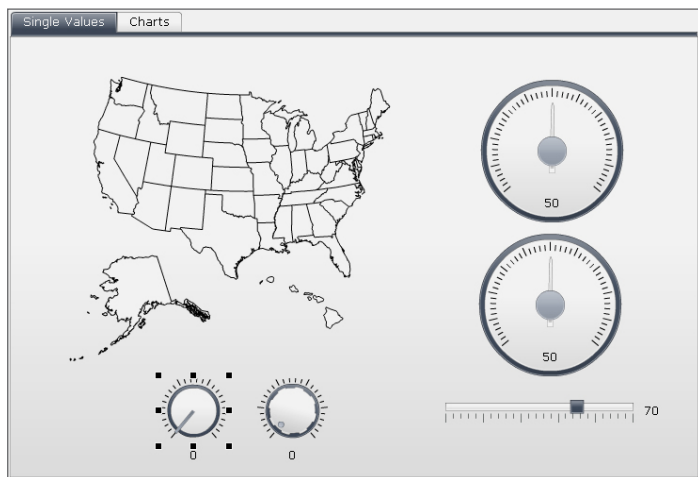
Take advantage of this component to save your end users from ever needing to reopen or reload Xcelsius models just to see the original data in the model. They can quickly reset to the original state of the visual model with a click of a button.

Print Button

Create and share data presentations and dashboards that look stunning even on paper. Take advantage of the new print button to print Xcelsius models in high-quality format. Since the print button always prints the latest state of the model, you don't have to worry about losing your what-if scenario analysis or live-data refresh when printing your models.

Maps

With the comprehensive map library, you can create geographical representations of your data. The map library includes maps of countries for various areas of the world. Each country is further divided into its appropriate subdivisions, such as state, province, county, and so on.



The Microsoft Excel data-mapping process is fully integrated with the Xcelsius designer tools, eliminating any need to alternate back and forth between Microsoft Excel and the designer.

Connection Refresh Button

This button simplifies the task of refreshing data in Xcelsius visual models for your end users by enabling them to refresh all external data connections and retrieve the latest data directly from the data source – with a single click.

New Features

The new features in Xcelsius 2008 are described below.

Dual Y-Axis Option

This feature enables you to plot a series on either the primary or secondary axis (see Figure 4). It's available on line, column, stacked-column, bar, stacked-bar, combination, area, and stacked-area charts.

Alerts in Selectors

This feature allows you to use existing alerting methodology to configure indexed-based selectors (such as list box or ticker) to display an alerts icon for each label. The alerts icons provide a quick and easy way for letting end users know when a predefined value has been reached, and they point them in the right direction for root-cause analysis.

Data Manager

In an effort to eliminate the time-consuming task of managing multiple data-connection buttons, Xcelsius 2008 now has a central location where you can create and manage all of the external data connections for your visual models.

Filtered Rows Insertion

A selector component can be bound to a source data range of multiple rows with duplicate labels; when you select a label, the component filters the range to insert only the rows corresponding to that label.

Dynamic Selected Item

In list-based selectors, you can change the labels dynamically through another component in the model.

Trigger Keys

Trigger keys are bound to variable cells and are set to fire when the cell value matches a target value. Trigger keys are used to trigger data connections and are also available in the URL button and connection refresh button.

Add-On Manager

The add-on manager feature allows you to install or remove add-ons from within Xcelsius 2008.

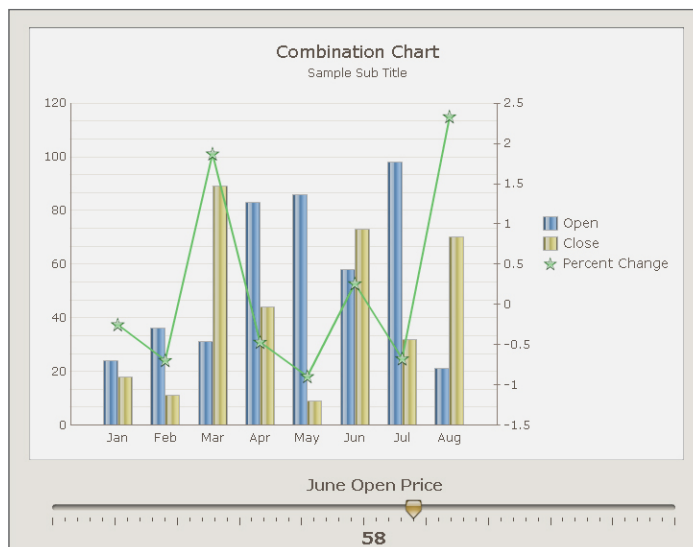


Figure 4:
Dual Y-Axis Option

NEW DATA CONNECTIVITY AND INTEGRATION OPTIONS

INTEGRATE WITH ADOBE PRODUCTS, CRYSTAL REPORTS, AND MORE

One-Click Export to SAP BusinessObjects Enterprise Software

Enjoy trouble-free management for your Xcelsius models by saving and exporting them to SAP BusinessObjects Enterprise software with a click of a button.

Export to Adobe Acrobat 9

Easily embed, resize, and move around your Xcelsius models inside PDF documents by taking advantage of the new flash content support features in Adobe Acrobat 9.

Export to Adobe AIR

Expand the reach and use of your business data by delivering it as part of easy-to-use desktop applications and widgets.

External Interface Connection

Data from an SWF file can now be passed into or out of a specific cell range, using push/pull technology.

Crystal Reports Software Enhanced Integration

Create interactive charts and what-if scenario models for your reports (see Figure 5). This enhanced integration automates the process of binding your report data to Xcelsius visual models – eliminating hours of manual coding.

Life-Cycle Management

Leverage the life-cycle management functionality in SAP BusinessObjects Enterprise to move Xcelsius models easily from development to production environments.

Portal Integration Kit for IBM WebSphere

Integrate Xcelsius dashboards and content into your IBM WebSphere portal. Xcelsius allows you to turn Xcelsius dashboards into IBM WebSphere portlets without coding, and it enables the creation of complex dashboards that interact across portlets.

Connectivity to Adobe LiveCycle Data Services ES

Create operational dashboards using your real-time transactional data sources, and reduce network congestion by leveraging Adobe LiveCycle Data Services ES to broadcast data to multiple dashboards in real time.

Flynet Web Services Generator

This point-and-click application allows you to access and expose company data from any Open Database Connectivity (ODBC) data source, such as Microsoft Access or SQL Server, for consumption in Xcelsius models – without writing any code.



Figure 5: Xcelsius® Analytics in Crystal Reports®

FLEXIBLE DESIGN AND CUSTOMIZATION FUNCTIONALITY

USE PREBUILT THEMES AND A SOFTWARE DEVELOPMENT KIT

Themes

Customize the look and feel of your data presentations and dashboards with prebuilt themes and color palettes (see Figure 6).

Software Development Kit

Create your own custom visualization component and data connectors for use with Xcelsius by taking advantage of the software development kit (SDK) for Xcelsius and Adobe Flex.



Figure 6:
New Themes

SAP BUSINESSOBJECTS SOLUTIONS

OPTIMIZE BUSINESS PERFORMANCE



plete and integrated business information. With insight into every aspect of the business, you can monitor performance, spot inefficiencies, and identify opportunities for growth.

In the face of growing compliance challenges – including environmental, health, financial, trade, border security, waste disposal, and specific customer requirements – you need to build controls and checks into your business processes. Supporting regulatory compliance also requires these processes to be fully transparent.

Turn Insight into Strategy

SAP BusinessObjects solutions are open, action-oriented, and connected. They deliver a complete, intuitive profile of business performance using any data from any application and any platform, and they ease collaboration to improve decisions and resolve issues. The solutions automatically detect significant risks and performance issues within and beyond the business.

With the SAP BusinessObjects portfolio, you gain broader insight and can align strategy, optimize decisions, and improve risk management, regardless of underlying transactional systems. The SAP BusinessObjects portfolio provides consistent, integrated solutions that are portable and interoperable, transforming the way you work by connecting people and information and optimizing business performance. In short, SAP BusinessObjects solutions help you turn insight into strategy and strategy into operational decisions ready for execution.

Empower your end users to quickly spot trends and patterns in your company data with the trend analyzer. This component automatically inserts linear, logarithmic, polynomial, power, or exponential statistical calculations into charts, tables, and other components at runtime.

SAP BusinessObjects Portfolio of Solutions

The SAP BusinessObjects portfolio of solutions helps you optimize business performance by enabling you to close the gap between strategy and execution while addressing business and compliance risks. To manage operations effectively, contain costs, and meet customer demands, you need comprehensive business solutions that provide com-

SUMMARY

Find Out More

To learn more about Xcelsius 2008
or to download a free trial, please visit
us on the Web at
www.sap.com/sapbusinessobjects.

All rights reserved. SAP, R/3, xApps, xApp, SAP NetWeaver, Duet, PartnerEdge, ByDesign, SAP Business ByDesign, and other SAP products and services mentioned herein as well as their respective logos are trademarks or registered trademarks of SAP AG in Germany and in several other countries all over the world.

Business Objects and the Business Objects logo, BusinessObjects, Crystal Reports, Crystal Decisions, Web Intelligence, Xcelsius, and other Business Objects products and services mentioned herein as well as their respective logos are trademarks or registered trademarks of Business Objects S.A. in the United States and in several other countries all over the world. Business Objects is an SAP company.

All other product and service names mentioned are the trademarks of their respective companies. Data contained in this document serves informational purposes only. National product specifications may vary.

These materials are subject to change without notice. These materials are provided by SAP AG and its affiliated companies ("SAP Group") for informational purposes only, without representation or warranty of any kind, and SAP Group shall not be liable for errors or omissions with respect to the materials. The only warranties for SAP Group products and services are those that are set forth in the express warranty statements accompanying such products and services, if any. Nothing herein should be construed as constituting an additional warranty.